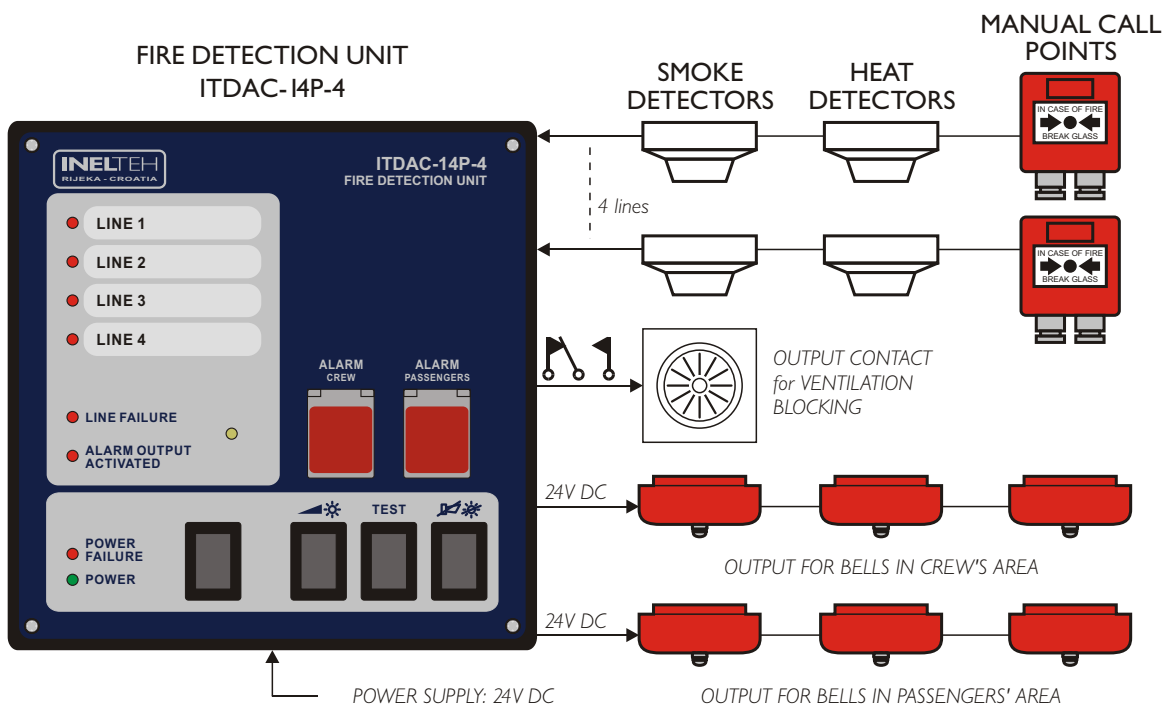


FIRE DETECTION UNIT ITDAC-14P-4

Fire detection system is one of the most important marine systems, since its functionality is directly connected with the safety of people and equipment. As such, it must provide reliable notification of fire and warn the responsible persons, in order to prevent fire spreading and potential catastrophic consequences.

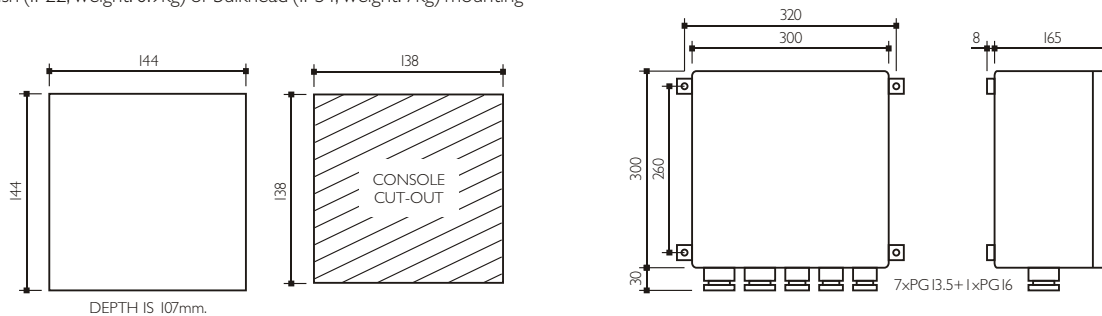
Inelteh's fire detection unit **ITDAC-14P-4** features:

- conventional fire detection system
- 4 fire detection lines
- automatic and/or manual alarm output activation
- separate and independent outputs for crew and passengers
- outputs 24V DC - fire bells can be directly connected
- type approved by Croatian Register of Shipping



FIRE DETECTION UNIT ITDAC-14P-4

- power supply: 24V DC (18-32V DC)
- current consumption (without bells): 200mA max.
- number of smoke and heat detectors in single line: 17 max.
- number of manual call points in single line is unlimited
- power failure signalization: LED + buzzer; built-in battery with automatic charging
- output contact for ventilation blocking: Voltage-free contact 5A/250V AC, activated as long as one of fire detectors is in alarm state and/or when alarm output is manually activated
- alarm output for crew: output 24V DC 1A max; activation: automatically (after 2 min if alarm isn't accepted) and/or manually
- alarm output for passengers: 24V DC 1A max; activation: manually
- flush (IP22, weight: 0.9kg) or bulkhead (IP54, weight: 7kg) mounting



All dimensions are in mm.

OPTICAL SMOKE DETECTOR

- power supply: 8.5-33V DC
- quick and reliable detection of smoke on the light scatter principle
- performs well in detecting black and white smoke
- with LED indication
- bulkhead mounting or wall mounting (on box with cable glands)
- approved for use in marine environment by GL, DNV, BV, LR, ABS, CCS
- IP protection: according to EN 54-7:2000

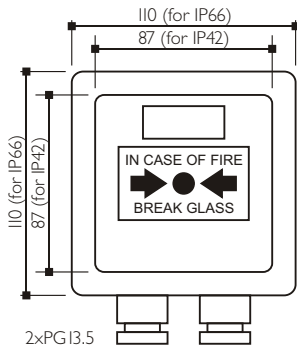


HEAT DETECTOR

- for applications where smoke detectors are unsuitable
- in environments that are dirty or smoky under normal conditions
- for temperature 65°C or for temperature 80°C (kitchen)
- power supply: 8.5-33V DC
- quick and reliable sensing of air temperature, using single thermistor
- with LED indication
- bulkhead mounting or wall mounting (on box with cable glands)
- approved for use in marine environment by GL, DNV, BV, LR, ABS, CCS
- IP protection: according to EN 54-7:2000

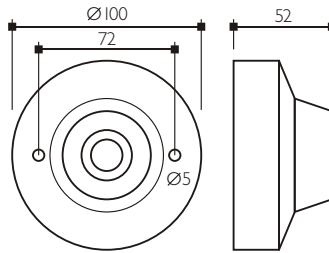
MANUAL CALL POINT

- conventional, with voltage-free contact and resistor element
- test-key for alarm simulation
- construction: ABS
- spare glass (on request)
- bulkhead mounting
- for indoor (IP42) or outdoor (IP66) use
- weight: 0.36kg (IP42 version) or 0.46kg (IP 66 version)

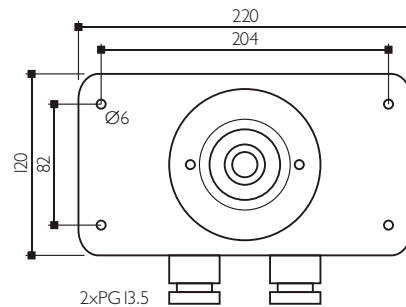


DEPTH: 53 (for IP42)
or 65 (for IP66)

Optical smoke and heat detectors, dimensions:



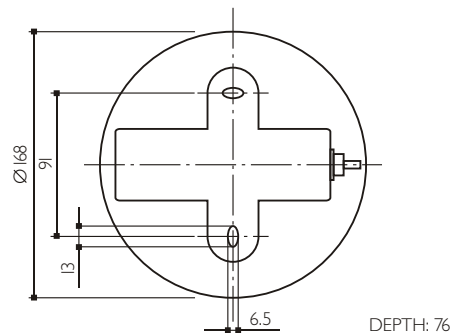
for bulkhead mounting
WEIGHT: 0.14kg



for wall mounting
DEPTH: 132; WEIGHT: 0.7kg

BELL CEADEL 165

- power supply: 24V DC
- current consumption: 0.3A
- sound pressure: 98dB / 1m
- IP protection: IP66
- weight: 1.6kg



All dimensions are in mm.