

AUDIBLE SIGNALIZATION

PROGRAMMABLE ELECTRONIC MULTITONE SIRENS WITH TWO INPUTS

- Specially designed for marine application
- With two inputs where using each one, different tones and frequency can be chosen by dip switches
- Each siren comprise electronic unit and one or more loudspeakers
- Each additional loudspeaker is same as additional siren
- High sound pressure and low power consumption occur due to microprocessor controlled switching amplifier
- All loudspeakers IP 56 (min) and control unit IP 55
- Power supply: 230V,AC / 110V,AC / 24V,DC

• ITES-105-...

- Sound pressure level 105dB
- Up to 4 loudspeakers (each 105dB)
- Loudspeaker for *ITES-105* can be mounted on control unit (for version with one loudspeaker)



ELECTRONIC UNIT
ITES-105



LOUDSPEAKER
HP-6C



LOUDSPEAKER MOUNTED ON CONTROL UNIT

• ITES-110-...

- Sound pressure level 110dB
- Up to 4 loudspeakers (each 110dB)



ELECTRONIC UNIT
ITES-110



LOUDSPEAKER
HP-10

• ITES-115-...

- Sound pressure level 115dB
- Up to 4 loudspeakers (each 115dB)



ELECTRONIC UNIT
ITES-115



LOUDSPEAKER
HP-15

• ITES-120-...

- Sound pressure level 120dB
- Up to 2 loudspeakers (each 120dB)



ELECTRONIC UNIT
ITES-120



LOUDSPEAKER
HP-30

ITES-II5Ex-...

- Sound pressure level 115dB
- 2 loudspeakers max.
- Loudspeakers are mounted in hazardous area
- ATEX certificate for loudspeaker: EEx dem IIB+H2 T5
- Other type of loudspeaker can be delivered as DSP-15 EExeN (110dB)



**ELECTRONIC UNIT
ITES-II5Ex**



**LOUDSPEAKER
DSP-25EExmN**

ITES-I26-...

- Sound pressure level 126dB
- 2 loudspeakers max.



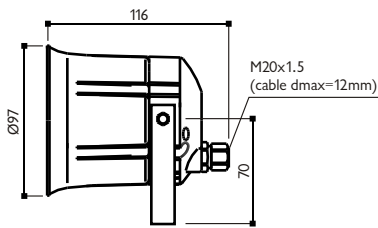
**ELECTRONIC UNIT
ITES-I26**



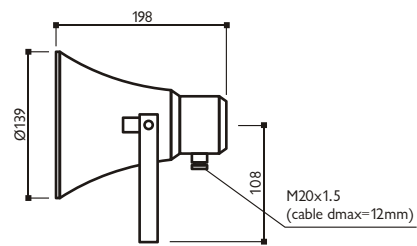
**LOUDSPEAKER
DS-100/DH-30**

DIMENSIONS

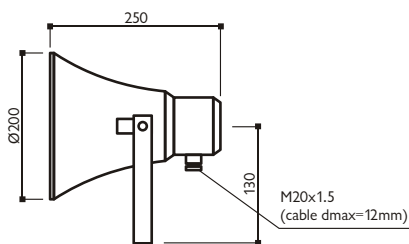
LOUDSPEAKER HP-6C / 6W



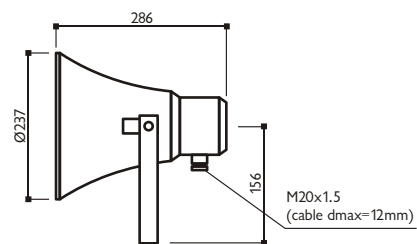
LOUDSPEAKER HP-10 / 10W



LOUDSPEAKER HP-15 / 15W

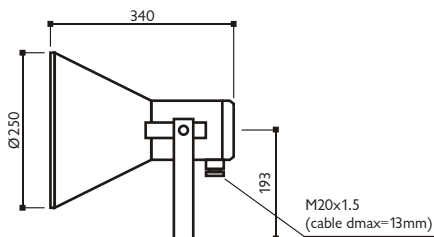


LOUDSPEAKER HP-30 / 30W

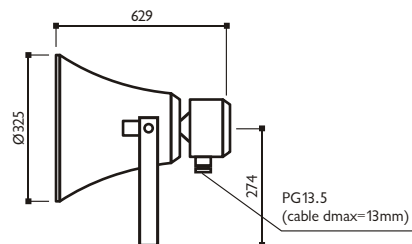


LOUDSPEAKER DSP-25 EExmN

Cerified by NEMKO/ATEX EEx dem IIB+H2 T5

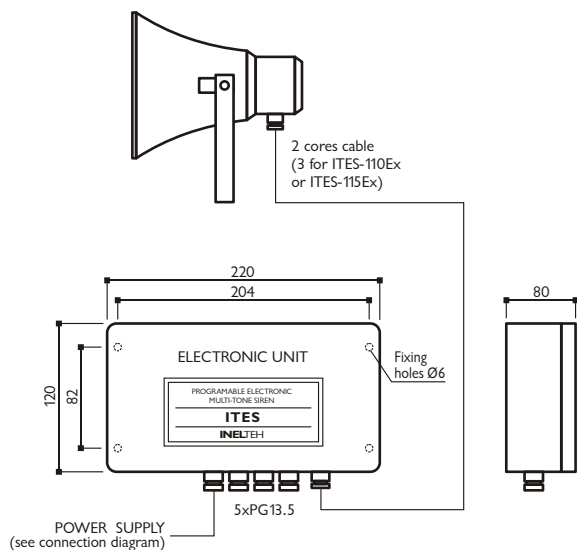


LOUDSPEAKER DS-100/DH-30 / 100W

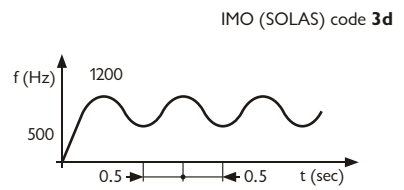
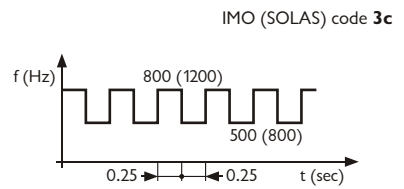
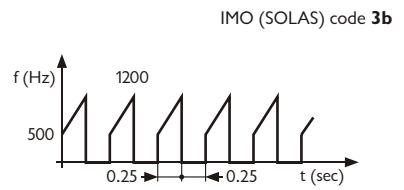
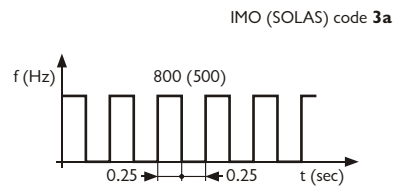
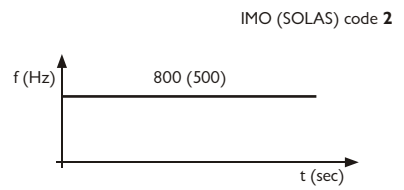


All dimensions are in mm.

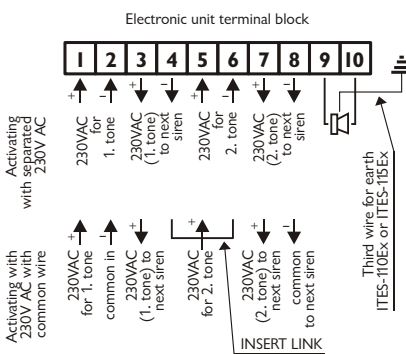
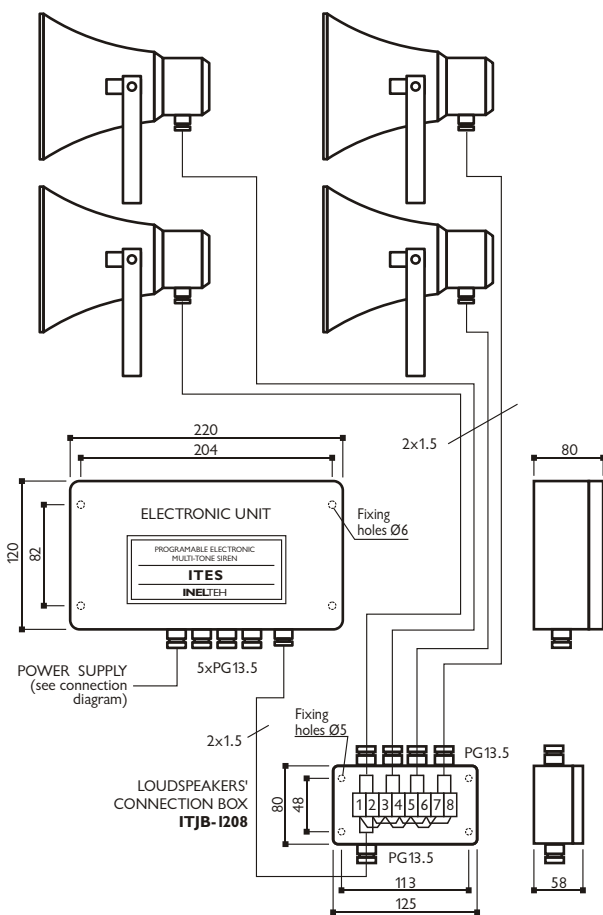
ONE LOUDSPEAKER **BLOCK DIAGRAM (EXAMPLE)**



Tones according to IMO (SOLAS)



MORE LOUDSPEAKERS **BLOCK DIAGRAM (EXAMPLE)**



PROGRAMMABLE ELECTRONIC MULTITONE SIREN WITH TWO INPUTS
ORDERING INFORMATION

ITES - 105 - 2 - 230

Ineltech's electronic siren

Basic type
105 = 105dB / **110** = 110dB / **115** = 115dB / **120** = 120dB
110Ex = 110 dB / **115Ex** = 115 dB / **126** = 126dB

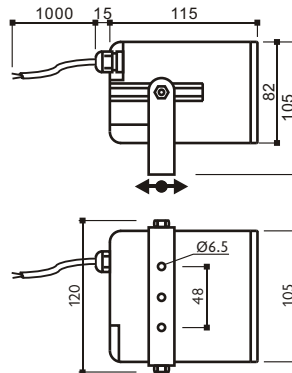
Power supply
230V,AC / 110V,AC / 24V,DC

Number of loudspeakers
 (for one loudspeaker - empty)
2 loudspeakers / **3** loudspeakers / **4** loudspeakers

ELECTRONIC MULTITONE SIRENS WITH ONE INPUT

**ITES-M-230
ITES-M-24**

- General purpose siren
- One of 32 different tones can be selected using dip switch
- Adjustable output level, using inside mounted potentiometer
- Sound pressure level 107 - 116dB depending of using tone
- Example:
 - continuous 500Hz, 108 dBA (peak 118dBA)
 - continuous 1000Hz, 109dBA (peak 118dBA)
 - double tone 600/700Hz, 110dBA (peak 120dBA)
 - double tone 800/970Hz, 112dBA (peak 120dBA)
 - multitone, intermittent 500-1200Hz, 113dBA (peak 113dBA)
 - multitone, fast 2400-2850Hz, 116dBA (peak 116dBA)
- Power supply:
 - type ITES-M-230: 230V AC/0.06A
 - type ITES-M-24: 24V DC/0.7A
- Weight 1kg

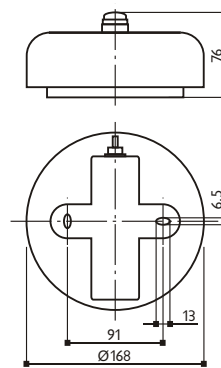


BELL

CEAD 165 / CEADEL 165

- CEAD 165 (AC version) / CEADEL 165 (DC version)
- colour red or grey
- IP 66 protection

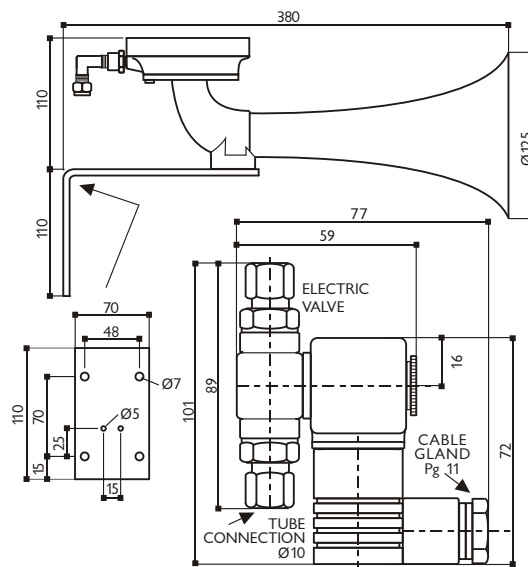
V—	12	24	110	230
mA	600	300	60	32
dB/1m	98	98	98	98
V~	12	24	110	230
mA	860	430	90	55
dB/1m	100	100	100	100



AIR SIREN

KT 75/400

- Frequency: basic tone 400 Hz
- Sound pressure level: 136dB(A) at 1 m, 120dB(A) at 6 m
- Working pressure: in inlet 2-12 bar
- Weight: 0.34 kg
- Valve solenoid power supply 230V AC
- Cable connector protection: IP 65



All dimensions are in mm.